



Gaseteria Works

30-10 41st Avenue
Long Island City, NY 11101

Turnkey private office and configurable workplace options for 1-10+ people readily available for an immediate start.

Amenities



Fully furnished



Subway Nearby



24-hour access



Meeting room access



High quality acoustics



Super fast WiFi



EARN 10% COMMISSION FOR YOUR FLEX REFERRALS

Property highlights

- Gaseteria Works by JLL is the perfect spot in Queens
- Bordering neighborhoods include: LIC, Astoria, Hunters Point, Greenpoint, Sunnyside, Jackson Heights
- Surrounded by great shops, restaurants and cafes
- Access to 5 major subway lines just blocks away
- Easily accessible to LIRR and NYC airports

Broker Commission: \$192,120
12-month potential commission available

Turnkey options available from \$750 - \$4900/month

- 10% first 12 months (calculated on rental only)
- 5% renewal of the space if real estate agent is involved after the initial 12-months
- 5% expansion during first 12 months

Membership inclusions:

- Monthly allowance for meeting rooms, coworking and printing
- Use of center address for your business
- Complimentary Wi-Fi with access to dedicated VLAN
- Dedicated team for mail redirection and secretarial services
- Unlimited, Premium coffee and tea
- Access to networking and community events

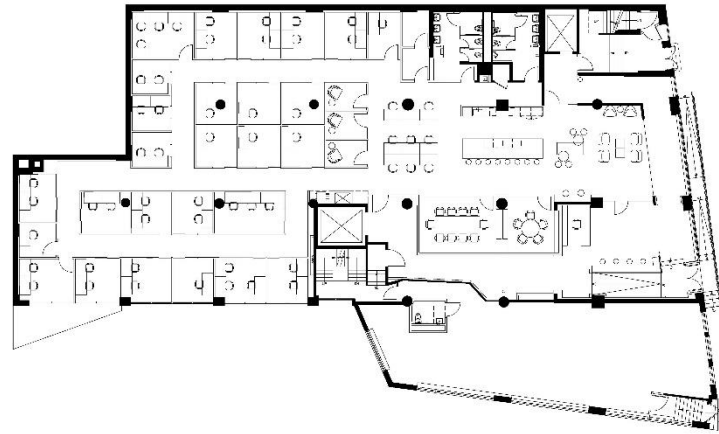
Area daytime business population:

(15-mile radius)

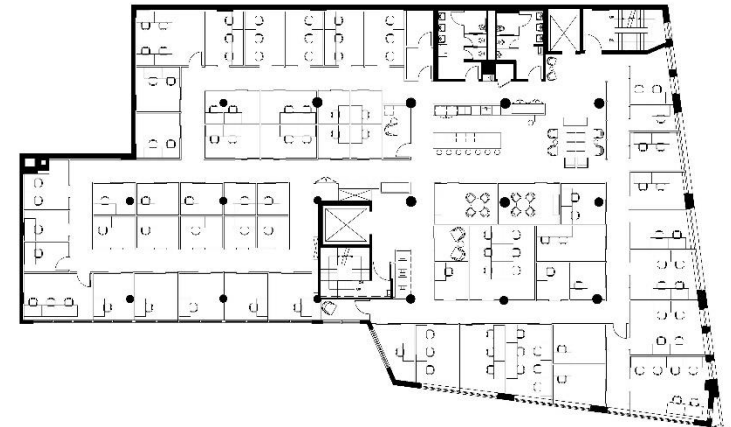
4,803,528

Source: ESRI, 2022

First Floor



Second Floor



Now available - Private offices

1-2 Person	50 -97 sq. ft.	\$750- \$2,000
3-4 Person	103-160 sq. ft.	\$1,575 - \$3,400
5+ Person	190 & up sq. ft.	\$2,700 +



www.gaseteriaworks.com
 team@gaseteriaworks.com
 +1 347 773 2137



Nicole Alesi
 773 520 7498
 Nicole.alesi@am.jll.com

Although information has been obtained from sources deemed reliable, JLL does not make any guarantees, warranties or representations, express or implied, as to the completeness or accuracy as to the information contained herein. Any projections, opinions, assumptions or estimates used are for example only. There may be differences between projected and actual results, and those differences may be material. JLL does not accept any liability for any loss or damage suffered by any party resulting from reliance on this information. If the recipient of this information has signed a confidentiality agreement with JLL regarding this matter, this information is subject to the terms of that agreement. ©2020. Jones Lang LaSalle IP, Inc. All rights reserved.